



Screening tool for identifying Domestic, Sexual and Gender Based Violence (DSGBV) in the Emergency Department

Mercy University Hospital (MUH), Connolly Hospital Blanchardstown (CHB), Cork University Hospital (CUH), National Emergency Medicine Programme

Gerry McCarthy, (Clinical Lead EMP), Niamh Collins (Consultant, EM, CUH CHB), Darren McLoughlin (Consultant, EM, CUH MUH), Eibhlin Collins (MUH), Katy Twomey (Principal Social Worker, CUH), Barbara O'Donnell (MUH), Anne Healy (MUH), Ruth Holland (MUH), Denis Spillane (MUH), Niamh Clarke (CHB), Liz McManus (CHB), Brigid Battersby (MUH), Fiona McDaid, EMP Nurse Lead, Mary Flynn EMP Programme Manager.

Introduction

Domestic, Sexual, Gender Based Violence (DSGBV) and coercive control refers to the use of physical, emotional force or threat of physical force, including sexual violence, in close adult relationships. Domestic Violence includes violence perpetrated by a spouse, partner, son, daughter or any other person who has a close relationship or lives with the victim. ^{(1) (2)}

Improved Awareness and Training for Staff in the EDs & Injury Units



Engagement

Mercy University Hospital, Cork University Hospital and Connolly Hospital collaborated to develop a standardised approach to identifying and responding to DSGBV in an emergency care setting.

DEFINE

Aims and Objectives

The key aim of the collaboration was to develop a screening tool for DSGBV at triage and develop a standardised response to disclosure of DSGBV in an emergency care setting.

DESIGN

Methodology

The Collaborative identified screening questions to be asked at triage, the process to support patients following disclosure of DSGBV and proposal for a tiered training response for all Emergency Departments (EDs) and Injury Unit (IUs) Staff from General Staff Awareness to Champions to Medical Social workers. Two gap analyses were undertaken to determine the number of Medical Social Workers (MSW) working in EDs and IUs and what training is available for DSGBV for EVERYBODY working in EDs and IUs.

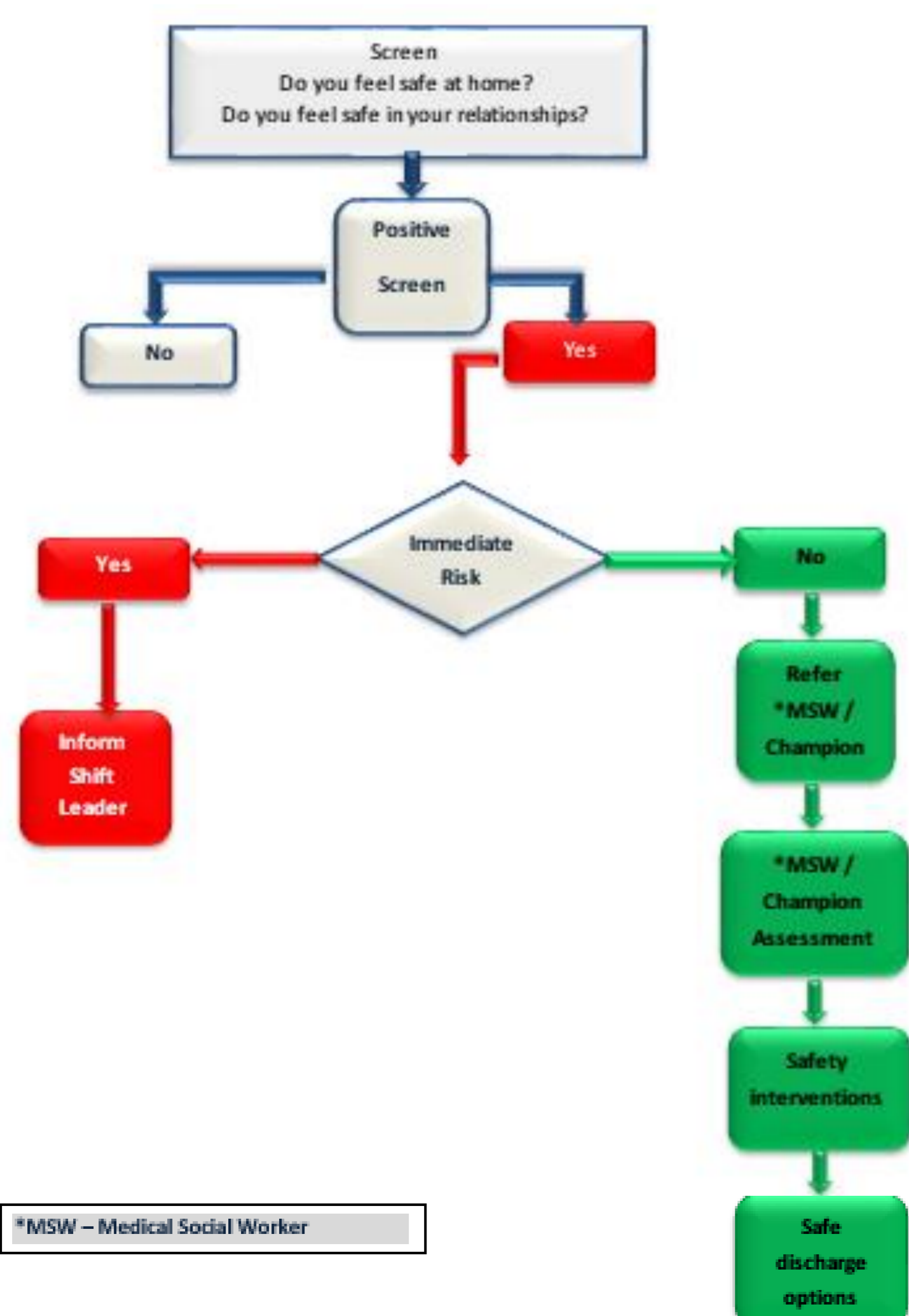
DELIVER

Findings

Of the 31 Emergency Departments and 11 Injury Units, only 17 have dedicated MSWs



Currently there is limited education or training on raising awareness or the management of DSGBV in EDs and IUs.



Outcomes

Next Steps

- Members of the Collaborative are working with TUSLA to support the rolling out of awareness and training nationally for DSGBV.
- Different levels of training dependent on roles/responsibility will be provided
- Training modules will include how to RECOGNISE, RESPOND, REFER and give note to SPECIAL CONSIDERATIONS for patient needs in relation to DSGBV.

Domestic, Sexual and Gender Based Violence – Training Module

Level I	General Staff Awareness
Level II	Champions
Level III	Medical Social Workers